

The Plan Library is live!

[See proposed plans from across the country.](#)



NewLegShapes.zip

State

New York

Legislative

Local Plan

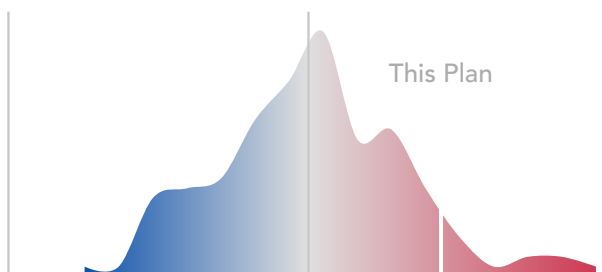
Added to PlanScore

Feb. 1, 2022

PlanScore bases its scores on predicted precinct-level votes for each office (State House, State Senate, and U.S. House) built from past election results and U.S. Census data. [More information about the predictive model used to score this plan.](#)

Charts and Graphs

Efficiency Gap: 11.1% R



+25% D

Balanced

+25% R

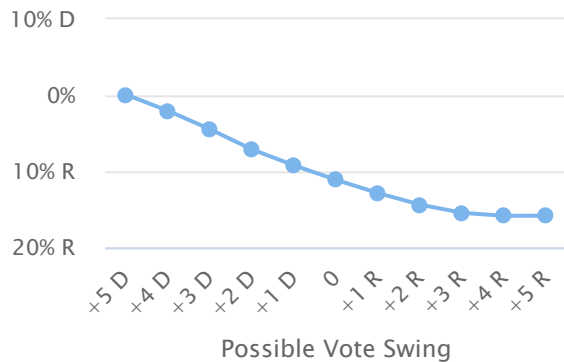
The Plan Library is live!

Votes for Republican candidates are expected to be inefficient at a rate 11.1% R lower than votes for

See proposed plans from across the country.

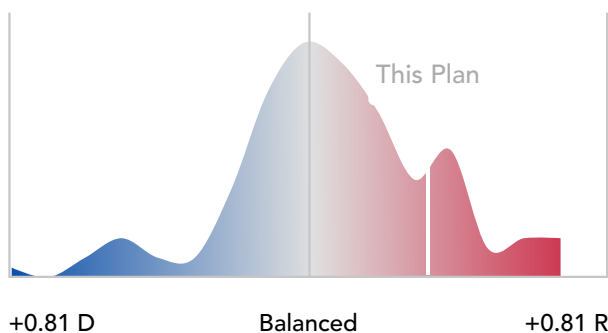
Democratic candidates, favoring Republicans in 94% of predicted scenarios.* [Learn more](#) >

Sensitivity Testing



Sensitivity testing shows us a plan's expected efficiency gap given a range of possible vote swings. It lets us evaluate the durability of a plan's skew.

Declination: 0.32 R



The difference between mean Democratic vote share in Democratic districts and mean Republican vote share in Republican districts along with the relative fraction of seats won by each party leads to a declination that favors Republicans in 96% of predicted scenarios.* [Learn more](#) >

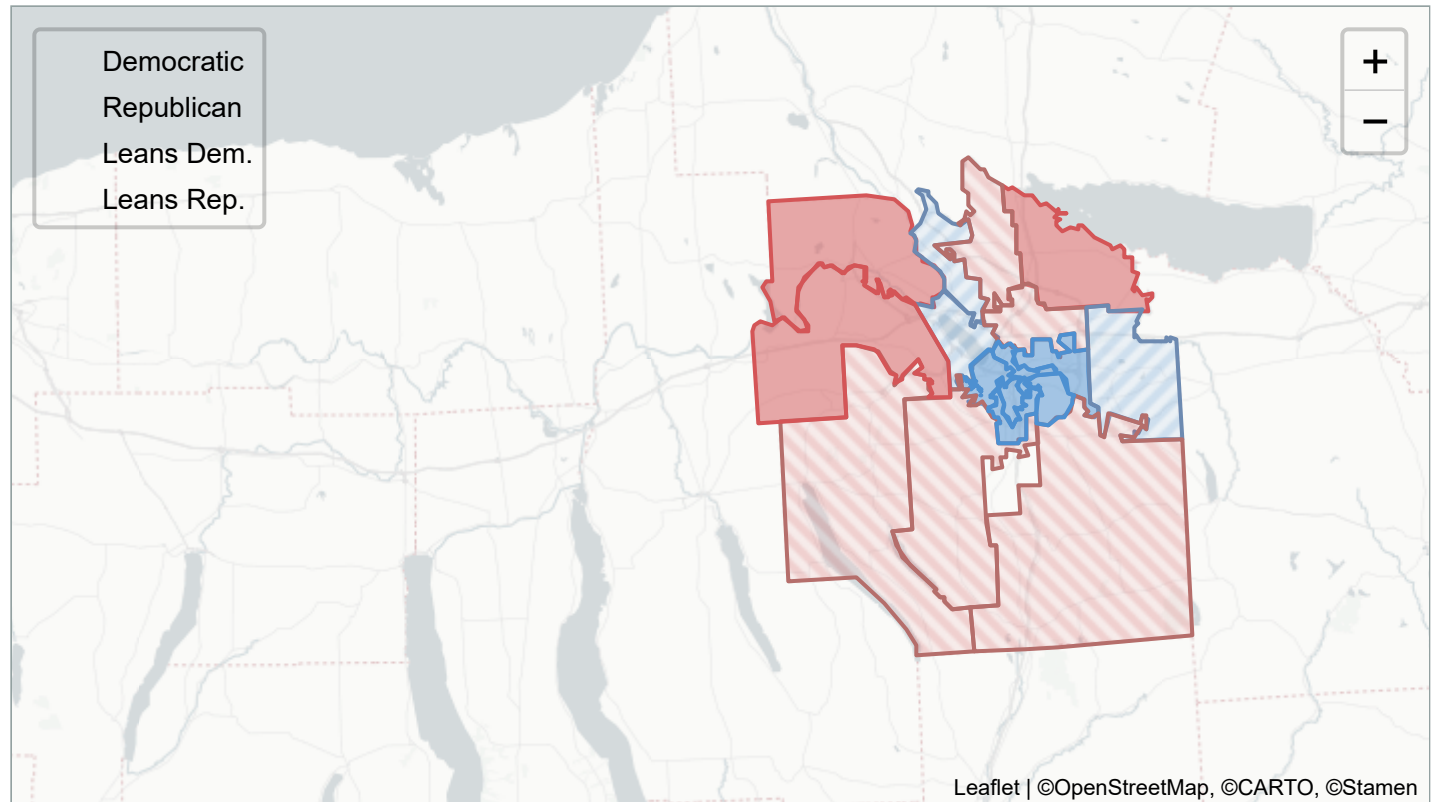
Partisan Bias

The parties' statewide vote shares are 58.7% (Democratic) and 41.3% (Republican) based on the model. Partisan bias is shown only where the parties' statewide vote shares fall between 45% and 55%. Outside this range the metric's assumptions are not plausible.

Mean-Median Difference

The parties' statewide vote shares are 58.7% (Democratic) and 41.3% (Republican) based on the model. The **The Plan Library is live!** mean-median difference is shown only where the parties' statewide vote shares fall between 45% and 55%. [See proposed plans from across the country.](#) Outside this range the metric's assumptions are not plausible.

District Map



District Data

District	Candidate Scenario	Pop. 2020	Hispanic CVAP 2019	Non- Hisp. Black CVAP 2019	Non- Hisp. Asian CVAP 2019	Non- Hisp. Native CVAP 2019	Chance of 1+ Flips [†]	Chance of Democratic Win	Pred
1	Republican Incumbent	27,311	2.1%	1.5%	1.1%	0.7%	No	12%	45%
2	Republican Incumbent	27,675	2.1%	6.1%	1.8%	0.5%	Yes	62%	51%
3	Republican Incumbent	28,219	1.4%	1.8%	1.3%	0.3%	No	3%	40%
4	Republican Incumbent	27,427	2.7%	4.6%	1.3%	0.9%	Yes	51%	50%
5	Republican Incumbent	28,436	2.5%	3.7%	1.4%	0.6%	Yes	29%	47%

The Plan Library is live!
[See proposed plans from across the country.](#)

District	Candidate Scenario	Pop. 2020	Hispanic CVAP 2019	Non- Hisp. Black CVAP 2019	Non- Hisp. Asian CVAP 2019	Non- Hisp. Native CVAP 2019	Chance of 1+ Flips†	Chance of Democratic Win	Pred
9	Democratic Incumbent	28,023	7.0%	20.4%	7.7%	3.1%	No	>99%	73%
10	Republican Incumbent	27,708	1.9%	2.5%	2.9%	0.7%	Yes	80%	54%
11	Republican Incumbent	26,626	2.3%	3.6%	1.2%	1.1%	Yes	30%	47%
12	Republican Incumbent	26,560	1.5%	2.8%	3.0%	1.3%	Yes	30%	47%
13	Republican Incumbent	27,394	2.6%	0.9%	0.7%	0.8%	No	8%	43%
14	Republican Incumbent	28,070	1.6%	4.3%	2.3%	0.7%	Yes	21%	46%
15	Democratic Incumbent	29,051	6.2%	29.5%	2.4%	1.5%	No	>99%	85%
16	Democratic Incumbent	28,263	10.4%	46.4%	3.3%	1.4%	No	>99%	92%
17	Democratic Incumbent	28,648	5.9%	19.8%	5.4%	0.7%	No	>99%	83%

Predicted 56% D / 44% R seat share across scenarios* vs. 59% D / 41% R vote share.
[Download raw data as tab-delimited text.](#)

Metric	Value	Favors Democrats in this % of Scenarios*
<u>Efficiency Gap</u>	11.1% Pro-Republican	6%
<u>Declination</u>	0.32 Pro-Republican	4%
<u>Partisan Bias</u>	N/A	N/A
<u>Mean-Median Difference</u>	N/A	N/A

Freedom to Vote Act Races

Section 5003(c)(3) of the FTVA specifies that partisan fairness should be assessed using a state's two most recent elections for U.S. President and two most recent elections for U.S. Senate.

U.S. President 2020: 23.6% D

Under this plan, votes for the Democratic candidate were inefficient at a rate 23.6% D lower than votes for the Republican candidate.

The Plan Library is live!

[See proposed plans from across the country.](#)

U.S. President 2016: 11.8% D

Under this plan, votes for the Democratic candidate were inefficient at a rate 11.8% D lower than votes for the Republican candidate.

U.S. Senate 2018: 25.8% D

Under this plan, votes for the Democratic candidate were inefficient at a rate 25.8% D lower than votes for the Republican candidate.

U.S. Senate 2016: 7.1% D

Under this plan, votes for the Democratic candidate were inefficient at a rate 7.1% D lower than votes for the Republican candidate.

* Scenarios are part of [the predictive model used to score this plan](#).

† 50%+ chance of one or more party flips assuming the plan is used for one decade with five State House elections, five U.S. House elections, or three State Senate elections.

‡ Enacted [U.S. House](#), [State House](#), and [State Senate](#) plan metrics are featured in our [historical dataset](#).



PlanScore is a project of Campaign Legal Center.

The Plan Library is live!

[See proposed plans from across the country.](#)